

Cubix Connector Install Guide



Contents

Cubix Connector Install

Installing the Cubix Connector	3
How to install the Cubix Connector	3

Cubix Connector Install

Installing the Cubix Connector

The Cubix Connector can be installed by standard and administrator users.

To install for all users, you must run the installation as an administrator. See the table below for detail:

Installed By	Installed For	Can be installed?
Standard User	Single User	Yes
	All Users	Yes - Run as Administrator*
Administrator	Single User	Yes
	All Users	Yes - Run as Administrator

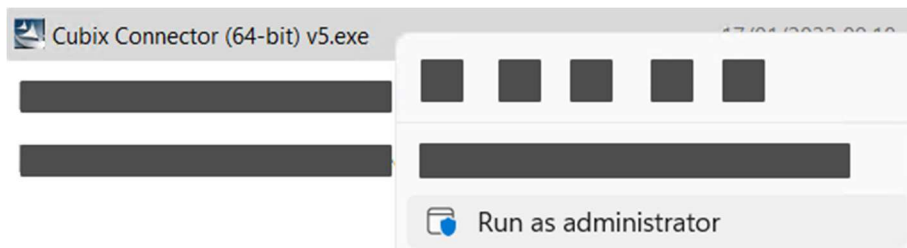
*provided you know an administrator username and password

How to install the Cubix Connector

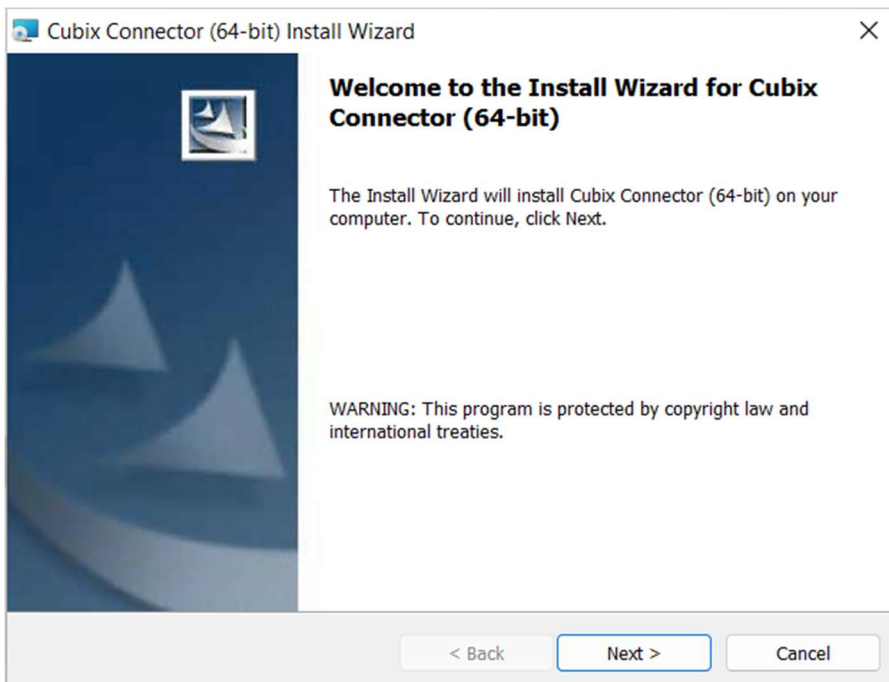
To install the Cubix Connector you must have an **Executable File** (.exe) called 'Cubix Connector ([32-bit or 64-bit]) v[Version Number]'.

To install the Cubix Connector:

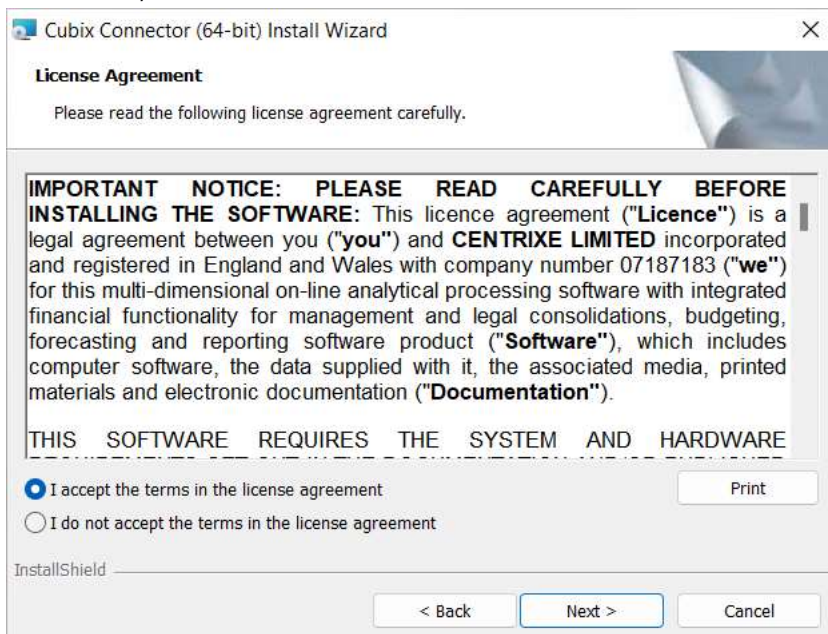
1. Open the **Executable File** to begin installing the Cubix Connector for a single user. If you wish to install for all users who have access to the machine; right-click and **Run as administrator** provided you are an administrator or know an administrator username and password.



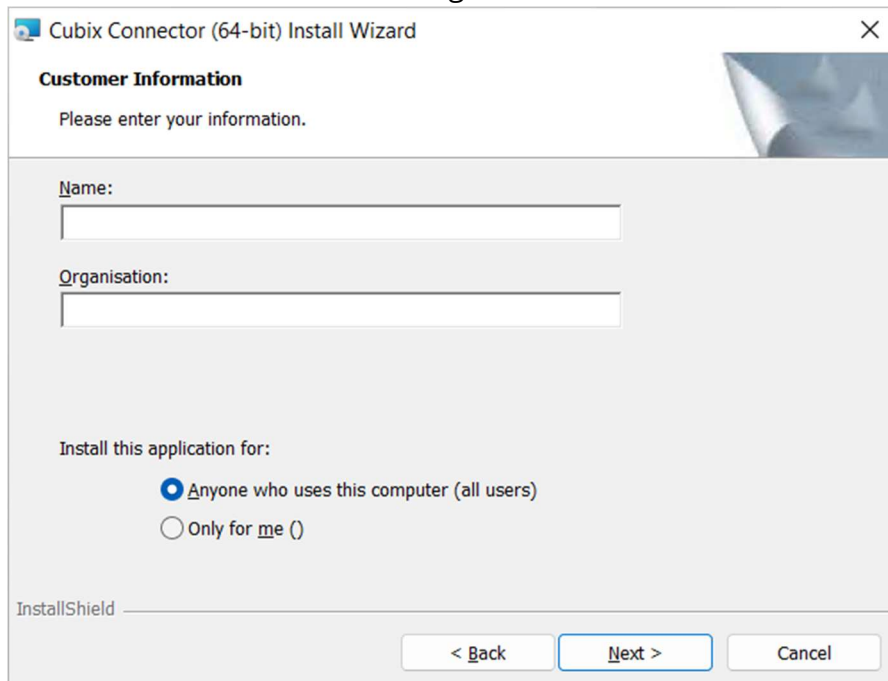
2. The **Cubix Connector Install Wizard** will open, click **Next** to continue.



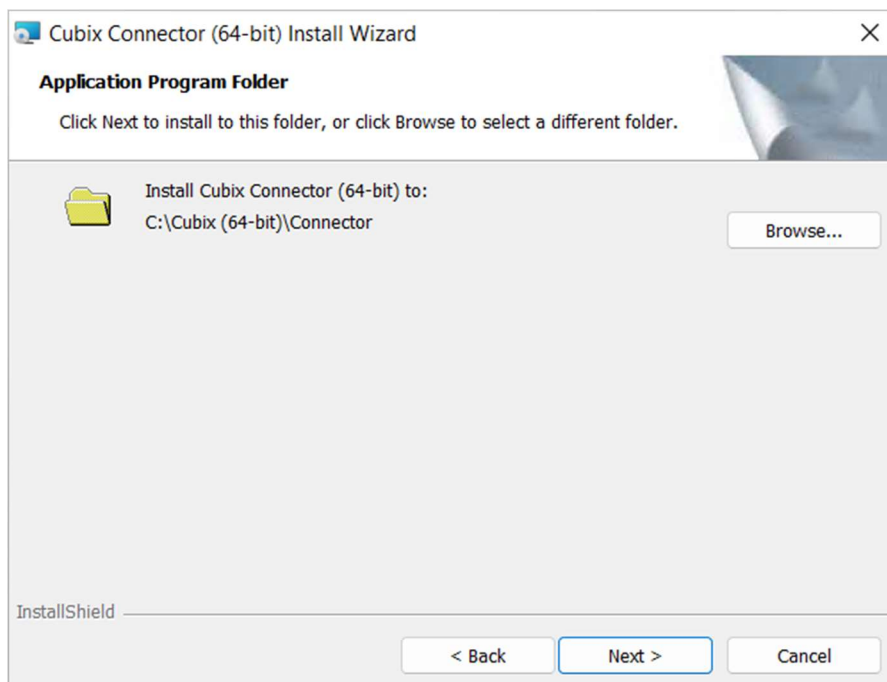
3. Read the **License Agreement** and accept the terms if you wish to proceed with the install, click **Next** to continue.



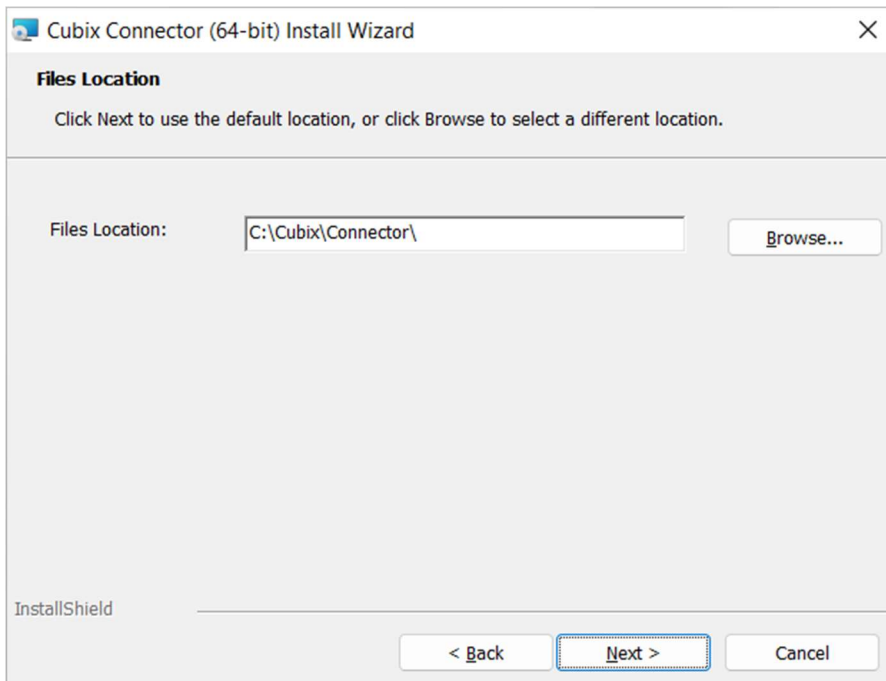
4. Enter a **Name** and **Organisation**. If you ran as an administrator, you can choose to install for all users or for a single user. Click **Next** to continue.



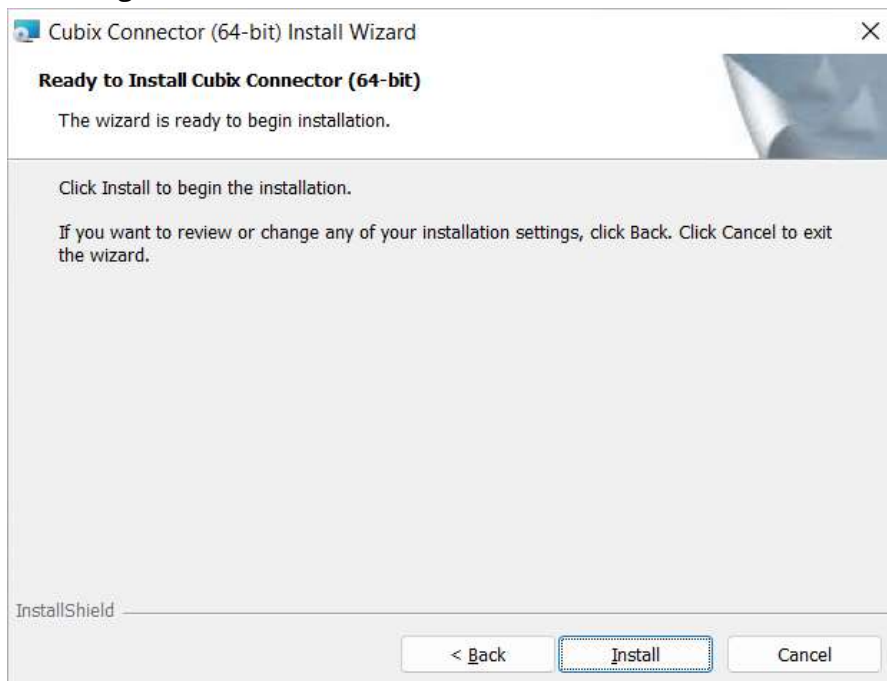
5. Click **Next** to install the Cubix Connector to the default folder or click **Browse** to select a different folder.



6. Click **Next** to use the default Connector files location or click **Browse** to select a different Connector files location.



7. The **Cubix Connector Install Wizard** is now ready to install, click **Install** to begin installing the Cubix Connector.



8. The **Cubix Connector Install Wizard** has installed the Cubix Connector, click **Finish** to exit.

